

Chicago Respiratory Illness Weekly Surveillance Report

Surveillance Week 52 (December 21 – December 27, 2025)

The [Chicago Respiratory Illness Dashboard](#) summarizes information about respiratory virus disease activity in Chicago, with a focus on COVID-19 (caused by the SARS-CoV-2 virus), influenza, and respiratory syncytial virus (RSV). The dashboard is updated every Friday at 1pm. This report is a supplement to the dashboard and summarizes select respiratory virus surveillance indicators. All data are preliminary and may change as additional reports are received.

Weekly Key Points

- **Overall acute respiratory illness activity level in Chicago has increased from Moderate to High.** Influenza activity increased from High to Very High and continues to increase significantly across all indicators. RSV activity remains Moderate, and COVID-19 activity remains Low but has been increasing across multiple surveillance indicators.
- **ED visits and hospitalizations for influenza** are at their highest levels since 2022 and increased across all age categories but most notably among children 0 –17 years. The cumulative influenza ICU admission rate is lower at this point in the year compared to the prior three seasons but may still increase due to reporting lags.
- **ED visits and hospitalizations for RSV** are similar to the prior week and are overall lower compared to the three prior seasons. ICU admissions for RSV are prominently among children <5 years of age and remain elevated but have declined over the past two weeks.
- **ED visits and hospitalizations for COVID-19** remain low but are at their highest level since Spring 2025 and are increasing. Cumulative ICU admission rates for COVID-19 are highest among adults ≥65 years and children <5 years of age.
- **Test positivity** for influenza increased from 17.7% to 24.3% this week. RSV test positivity increased from 4.4% to 5.0%, and COVID-19 test positivity increased from 4.4% to 6.6%.
- Almost all (99.1%) **typed influenza specimens** for the week are influenza A; among those subtyped, 95% have been H3N2 and 5% have been (H1N1)pdm09.
- **Wastewater concentration** data will be unavailable during 12/22/25–1/2/2026. Reporting will resume on 1/9/2026.
- **The respiratory season is here.** [Vaccines](#) are the best way to protect yourself and others from severe disease. It's not too late to get vaccinated! Other ways to reduce your risk include practicing good respiratory hygiene (e.g., cover your cough, wash your hands), taking steps for cleaner air, staying home and away from others when ill, and wearing a mask especially when ill or recovering from illness.
- Chicago residents can receive vaccinations at no cost through the [CDPH's standing Immunization Clinics](#).
- IDPH has recommended health care facilities follow enhanced precautions, including temporary visitor restrictions and broader use of source control, with the increase in acute respiratory illness activity in Illinois. See the [Health Alert issued on 12/26/2025](#) for full details.

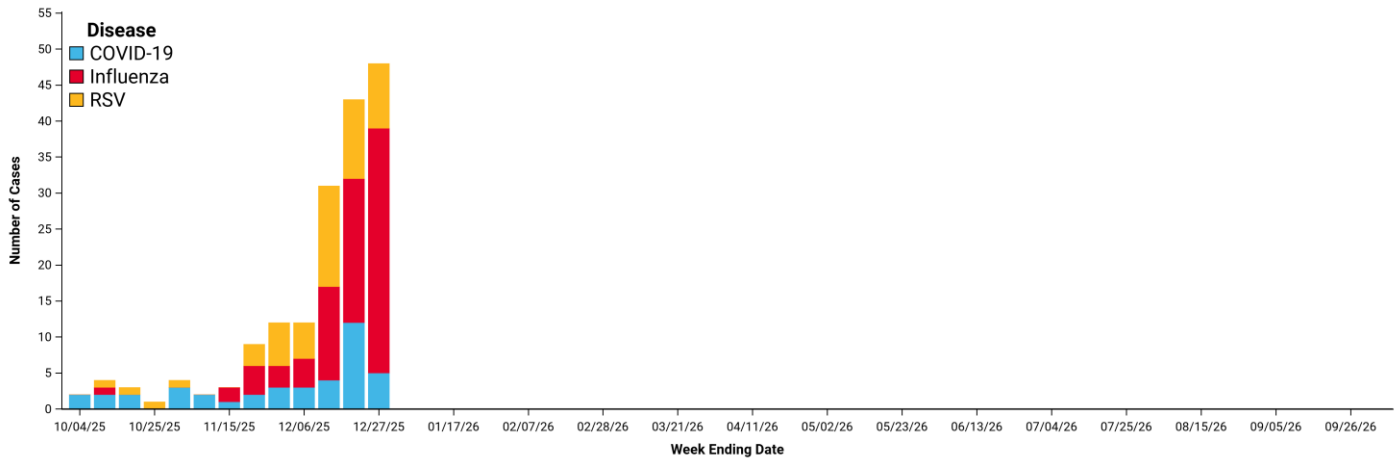
Influenza, RSV, and COVID-19-Associated ICU Admissions

In Illinois, influenza, RSV, and COVID-19-associated ICU hospitalizations are reportable as soon as possible but within three days. The table summarizes selected characteristics of reported cases for the current week and cumulative for the season.

	Week ending December 27, 2025						Since September 28, 2025					
	Influenza		RSV		COVID-19		Influenza		RSV		COVID-19	
	N	Col %	N	Col %	N	Col %	N	Col %	N	Col %	N	Col %
Citywide	34	100	9	100	5	100	81	100	52	100	41	100
Age												
0-4 years	5	14.7	6	66.7	2	40.0	8	9.9	40	76.9	7	17.1
5-17 years	4	11.8	1	11.1	0	0.0	12	14.8	2	3.8	1	2.4
18-49 years	12	35.3	0	0.0	1	20.0	21	25.9	1	1.9	4	9.8
50-64 years	5	14.7	1	11.1	1	20.0	13	16.0	5	9.6	9	22.0
65+ years	8	23.5	1	11.1	1	20.0	27	33.3	4	7.7	20	48.8
Race-Ethnicity												
White Non-Latino	2	5.9	2	22.2	2	40.0	5	6.2	14	26.9	10	24.4
Black Non-Latino	20	58.8	5	55.6	1	20.0	49	60.5	20	38.5	14	34.1
Latino	9	26.5	2	22.2	0	0.0	20	24.7	11	21.2	14	34.1
Asian Non-Latino	0	0.0	0	0.0	1	20.0	2	2.5	1	1.9	2	4.9
Other Non-Latino	1	2.9	0	0.0	1	20.0	1	1.2	4	7.7	1	2.4
Unknown-Race	2	5.9	0	0.0	0	0.0	4	4.9	2	3.8	0	0.0

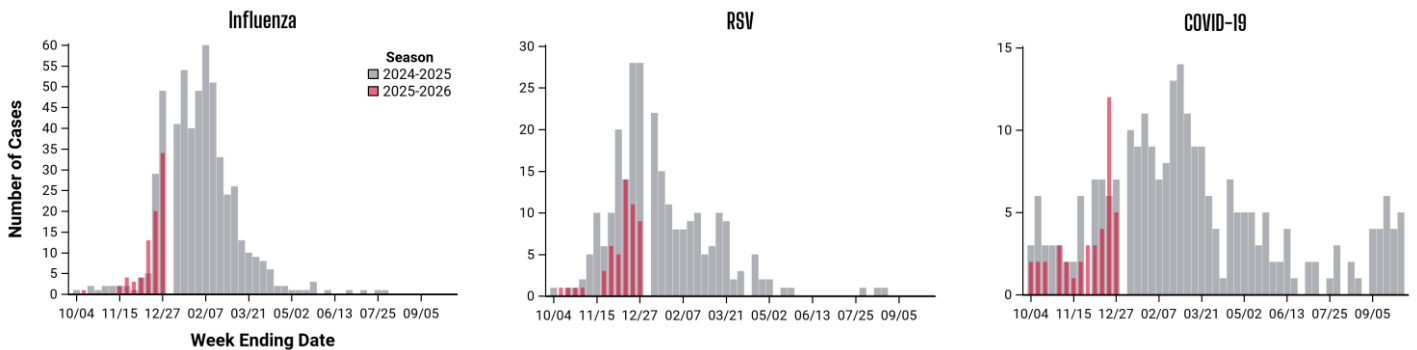
Weekly Count of ICU Admissions by Disease

The graph below shows the weekly number of reported ICU hospitalizations for Chicago residents this season.



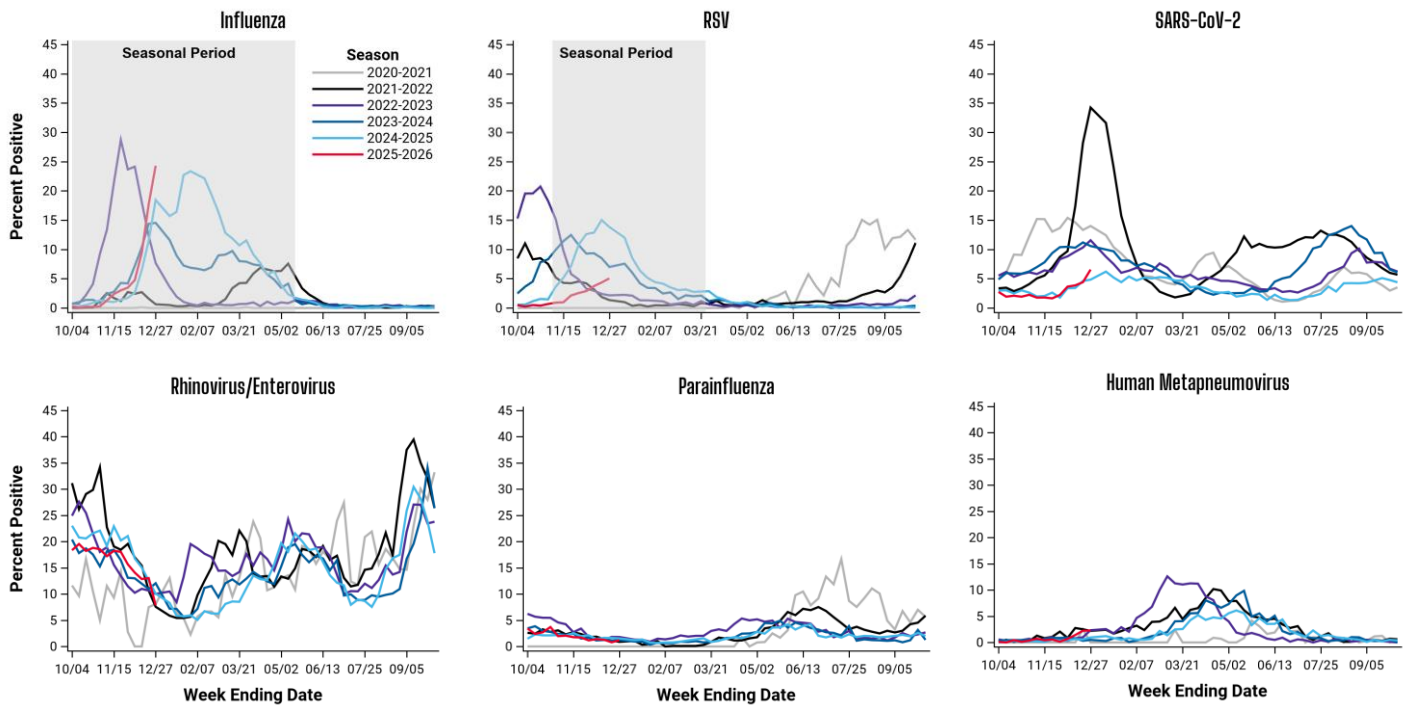
Seasonal Comparison of ICU Admissions

The graph below shows the weekly number of reported ICU hospitalizations for Chicago residents for previous two seasons.



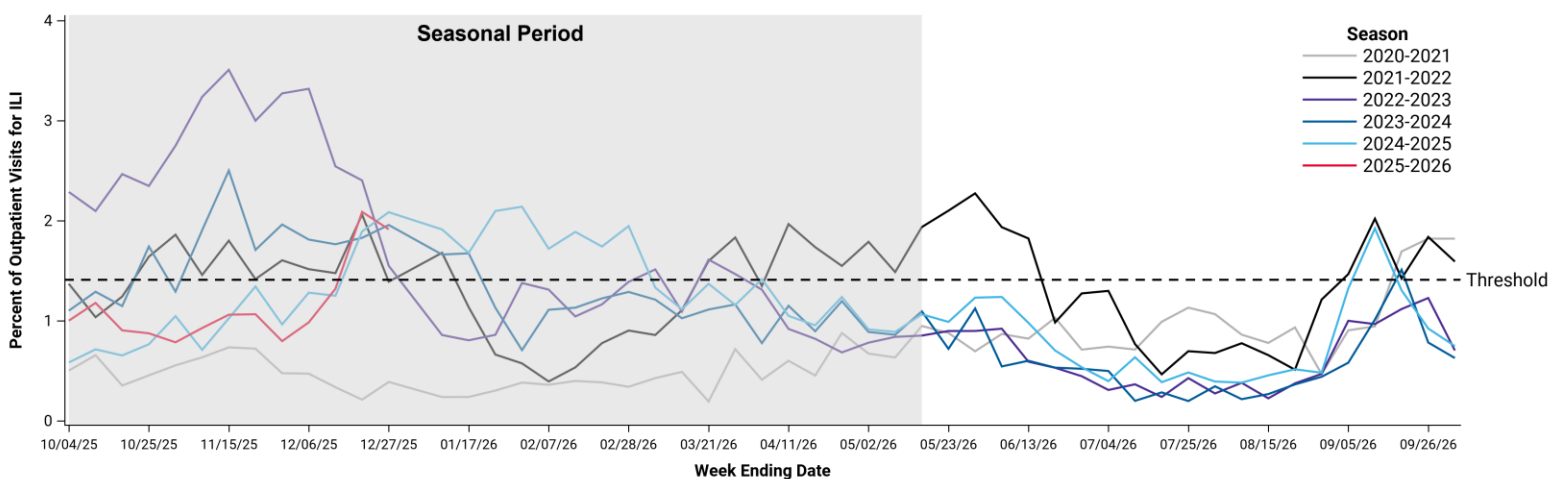
Respiratory Virus Laboratory Surveillance – Seasonal Trends

Several hospital laboratories in Chicago as well as two commercial laboratories serving Chicago facilities report aggregate results from respiratory viral PCR tests. Reporting facilities represent nearly half of all acute care hospitals in the city. Data reported include Chicago and non-Chicago residents. These graphs show seasonal trends of selected respiratory virus testing data. Typical seasonal periods when activity tends to increase for influenza and RSV are indicated by shaded areas. Elevated test positivity outside of typical seasonal periods suggests atypical activity, and increased clinician awareness and testing may be warranted. Yearly data can also be used to compare the timing and intensity of viral activity, although changes in testing patterns also influence yearly trends, and data should be interpreted in the context of other surveillance indicators.



Outpatient Visit Illness Surveillance

Several outpatient clinics throughout Chicago participate in CDC’s Influenza-like Illness Surveillance Network (ILINet) by reporting on a weekly basis the total number of outpatient clinic visits, and of those visits, the number with influenza-like illness (ILI). This graph shows the percent of medically-attended outpatient visits attributed to ILI as reported by ILINet facilities in Chicago.





National and State Respiratory Virus Surveillance

National Surveillance Reports

- [CDC Respiratory Illness Data Channel](#)
- [CDC FluView](#)

Illinois Surveillance Reports

- [Illinois Department of Public Health Seasonal Respiratory Illness Dashboard](#)
- [Cook County Department of Health Respiratory Surveillance Data](#)

Current and archived issues of the Chicago Influenza and Respiratory Virus Surveillance Report can be found on the CDPH website [Historical Respiratory Virus Surveillance Reports](#).